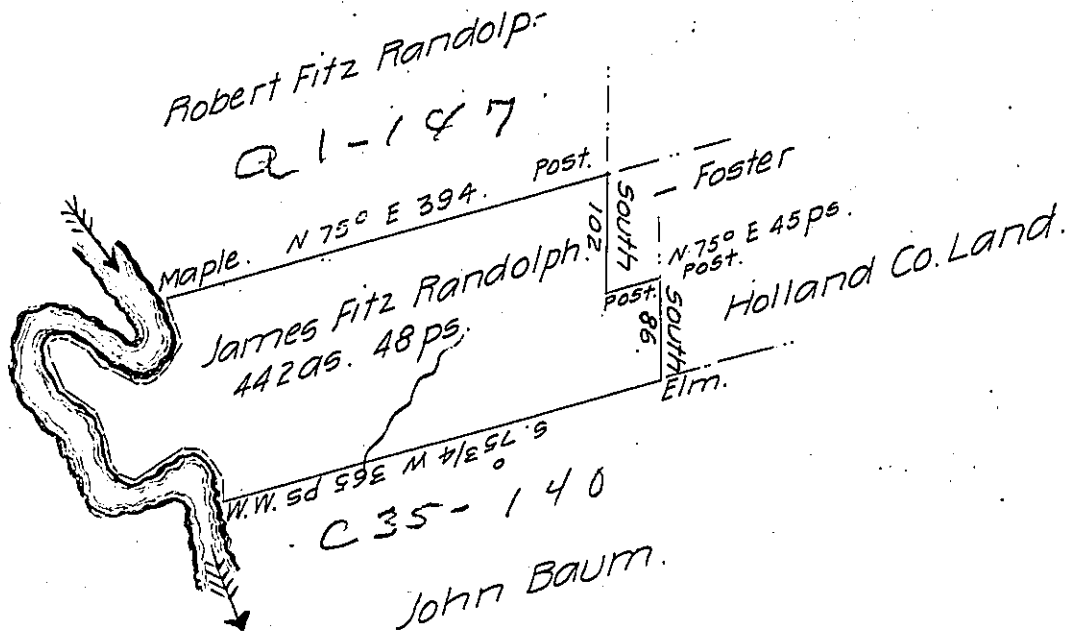


Courses and distances up French Creek beginning at a White Walnut.

- N. 3 1/2 W. 22.8
- N. 36 1/2 W. 24.
- N. 50 1/2 W. 10.9
- N. 80° W. 14.
- N. 89° W. 12
- S. 57 1/2 W. 50
- N. 69° W. 11.1
- N. 23 3/4 W. 12.
- N. 5 1/4 W. 16
- N. 13 1/2 W. 14
- N. 23° W. 16
- N. 54 1/4 W. 31.6
- N. 21 1/4 W. 25.5
- N. 2° E. 12.2.
- N. 44 E. 8.0
- S. 82° E. 12.0
- S. 55° E. 15.0
- S. 44 E. 21.4
- S. 61 1/2 E. 5.8
- S. 65 1/4 E. 22.5
- N. 87° E. 9.8
- N. 55° E. 7.2
- N. 36 1/2 E. 7.9
- N. 3 1/2 E. 22.0
- N. 20 1/2 W. 27.0
- to a maple.



In pursuance of a Warrant for 400 acs of land dated the 28th day of July 1802, was surveyed the 12th day of November 1802 for James Fitz Randolph the above described Tract of Land containing 442 acres 48 perches and allowance of six per cent for Roads &c. Situate in Mead Township and Crawford County.

William M^cArthur D.S.

Samuel Cochran Esquire
Surveyor General.

IN TESTIMONY that the above is a copy of the original remaining on file in the Department of Internal Affairs of Pennsylvania, made conformably to an Act of Assembly approved the 16th day of February, 1833, I have hereunto set my Hand and caused the Seal of said Department to be affixed at Harrisburg, this fourteenth day of November 1906

Isaac D. Brown
Secretary of Internal Affairs.